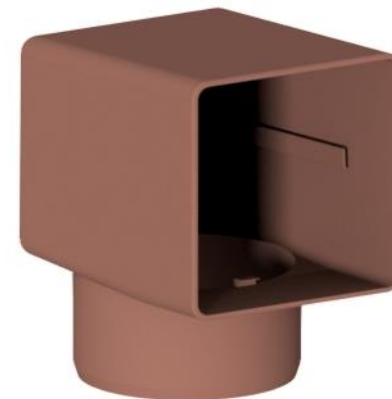
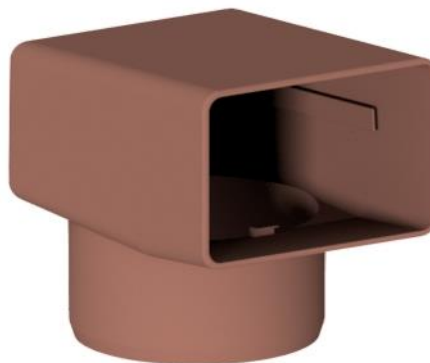
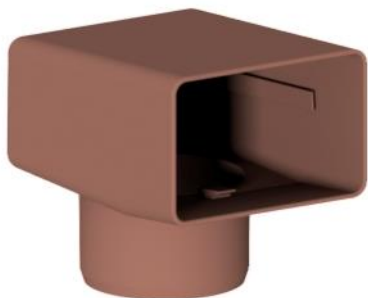




BENDS FOR CORNER FITTING



**All technical properties indicated are average values typical of the raw material used for the production, and they are not specifications. All information contained in this document only gives a generic description of the material used.*

Technical data sheet for PPC			
Typical Physical-Mechanical Properties	Method	u.m.	Values
Weight density	ISO 1183	g/cm ³	0,905
Hardness R SCALE	ISO 2039-2	-	80
Tensile strength	ISO 527	MPa	23
Breaking strain	ISO 527	%	6
Melt flow index	ISO 1133	g/10'	13

MCTE-001-A01-05