



Data sheet

Bends for corner fittings 65x100

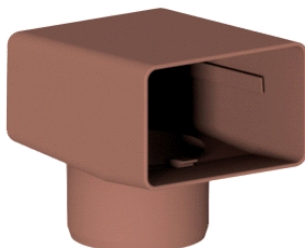
210-300-065-000

Rev.00

24/09/2013

Group

210-300-001



Function The bends serve to channel the rainwater from the corner fittings into the down pipes. They have a very linear design without fluting, which gives a very pleasing appearance. They have four internal wings to block the walls of the corner fitting, this avoids longterm deformation.

Compatibility They can be used with all kinds of Impertek corner fittings.

Range Section 65x100: DN80 DN100

Performance Resistant to deterioration by the sun, ozone and other agents or chemicals normally found in the atmosphere. They have excellent flexibility even at low temperatures. The mechanical properties are maintained in the long term.

Operating temperature -20°C; +70°C

Included accessories:	-	Recycled product	No
Optional accessories:	-	Recyclable product	Yes
	-	Material	PP
	-		
	-		

Additional information

Maximum resistance to the light

If not otherwise indicated, all measurements are expressed in millimetres.



Data sheet

Bends for corner fittings 65x100

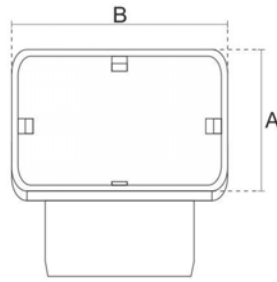
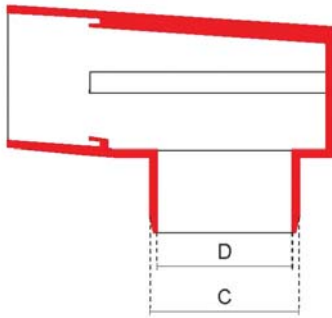
210-300-065-000

Rev.00

24/09/2013

Group

210-300-001



Line Item	Description
-----------	-------------

- | | |
|---|-----------------------------------|
| 1 | FR-CC-80-65/100 BEND 65x100 Ø 80 |
| 2 | FR-CC-100-65/100 BEND 65x100 Ø100 |

A	B	C	D	E	F	G	H	I
65	100	77	73					
65	100	97	92					

If not otherwise indicated, all measurements are expressed in millimetres.



Data sheet

Bends for corner fittings 100x100

210-300-100-000

Rev.00

24/09/2013

Group

210-300-003



Function The bends serve to channel the rainwater from the corner fittings into the down pipes. They have a very linear design without fluting, which gives a very pleasing appearance. They have four internal wings to block the walls of the corner fitting, this avoids longterm deformation.

Compatibility They can be used with all kinds of Impertek corner fittings.

Range Section 100x100: DN80 DN100

Performance Resistant to deterioration by the sun, ozone and other agents or chemicals normally found in the atmosphere. They have excellent flexibility even at low temperatures. The mechanical properties are maintained in the long term.

Operating temperature -20°C; +70°C

Included accessories:	-	Recycled product	No
Optional accessories:	-	Recyclable product	Yes
	-	Material	PP
	-		
	-		

Additional information

Maximum resistance to the light

If not otherwise indicated, all measurements are expressed in millimetres.



Data sheet

Bends for corner fittings 100x100

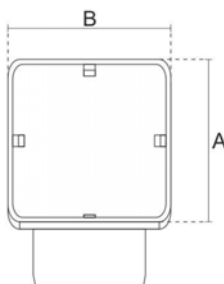
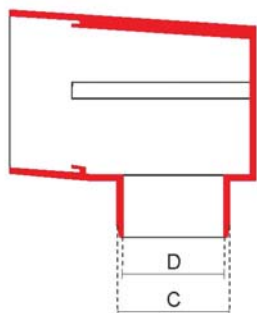
210-300-100-000

Rev.00

24/09/2013

Group

210-300-003



Line Item	Description
3	FR-CC-80-100/100 BEND 100x100 Ø80
4	FR-CC-100-100/100 BEND 100x100 Ø 100

A	B	C	D	E	F	G	H	I
100	100	77	73					
100	100	97	92					

If not otherwise indicated, all measurements are expressed in millimetres.